

A 71-160

Samuel Dixon

Courses & Distances down the Creek from Cherry

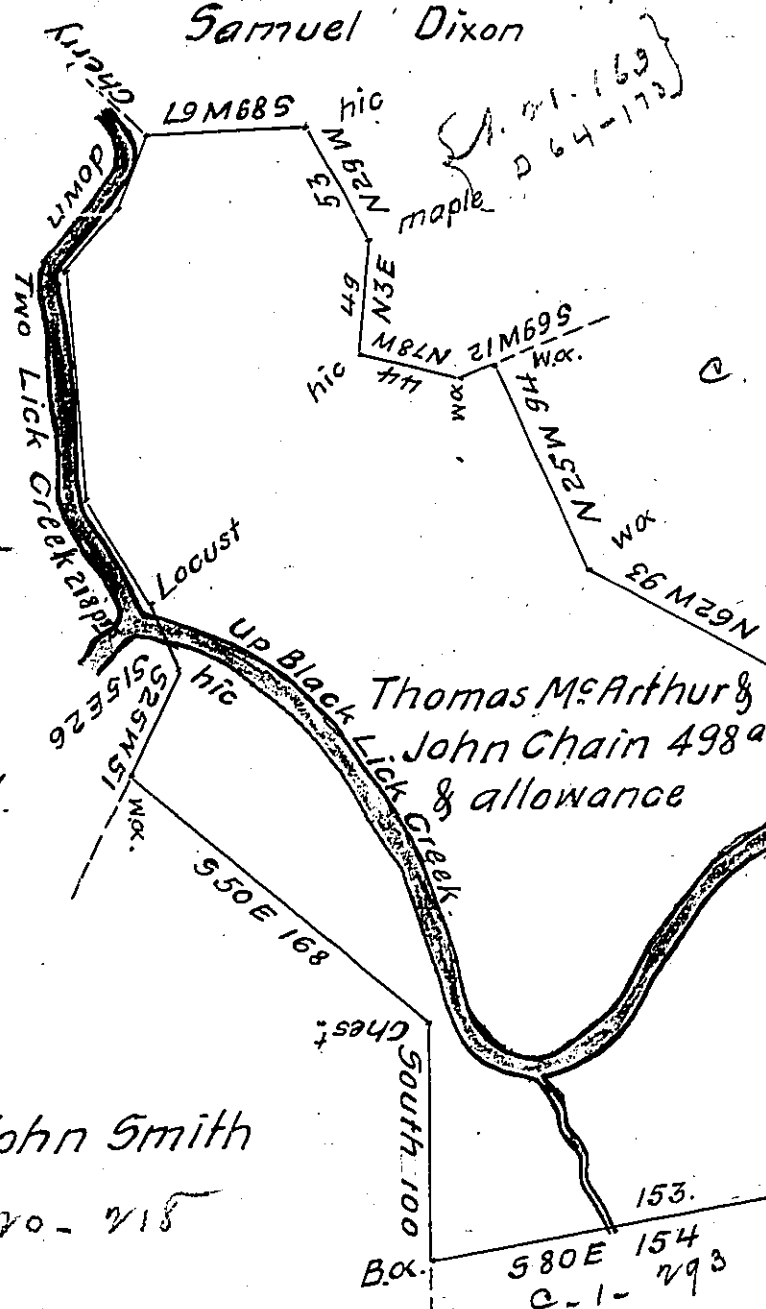
5 23 W 34

5 42 W 34

5 5 E 98

5 32 E 52

all 218 Pts



C. 70-775

William Beaty

Rev. John Smith

C. 70-715

Thomas McArthur & John Chain 498^a & allowance

C. 147-158

C. 147-159

C. 33-93

Peter Fare

Survey'd on the 29th March 1787 to Thomas McArthur & John Chain the above Described Tract of Four Hundred and Ninety eight acres, and Allowance of Six $\frac{1}{2}$ Cent. Situate in the Forks of Black lick & two lick Creeks, Opposite the Rev. John Smith's Improvement, Including a mill Seat on Black lick & a Bottom on the North Side thereof, in Westmoreland County by two warrants the One dated March 6th 1775 and the other July 30th 1784 ~ Now part in Derry & part in Armstrong Township Westm^d

Joshua Elder D.S.

John Lukens Esq. S. Genl.

IN TESTIMONY that the above is a copy of the original remaining on file in the Department of Internal Affairs of Pennsylvania, made conformably to an Act of Assembly approved the 16th day of February, 1833, I have hereunto set my Hand and caused the Seal of said Department to be affixed at Harrisburg, this third day of January 1906

Isaac B. Brown
Secretary of Internal Affairs.